



LED LIGHTED CHROME SPEAKER GRILLS

3920

THANK YOU FOR CHOOSING KÜRYAKYN!

PROTECT YOURSELF AND OTHERS FROM POSSIBLE INJURY AND PROPERTY DAMAGE OR LOSS. PAY CLOSE ATTENTION TO ALL INSTRUCTIONS, WARNINGS, CAUTIONS, AND NOTICES REGARDING THE INSTALLATION, USE, AND CARE OF THIS PRODUCT.

WARNING

THIS INDICATION ALERTS YOU TO THE FACT THAT IGNORING THE CONTENTS DESCRIBED HEREIN CAN RESULT IN POTENTIAL DEATH OR SERIOUS INJURY.

CAUTION

This indication alerts you to the fact that ignoring the contents described herein can result in minor or moderate potential injury.

NOTICE

This indication alerts you to the fact that ignoring the contents described herein may negatively affect product performance and functionality or damage the product itself or the product to which it is being attached.

MAKE SURE THE FOLLOWING PARTS HAVE BEEN INCLUDED IN THE KIT:

- 1 Left Speaker Bezel
- 1 Right Speaker Bezel
- 1 Dielectric Grease Pack
- 1 Y-Adapter Plug
- 1 Installation Instructions

TOOLS SUGGESTED:

Non-marring pry-tool, Phillips screwdriver, small flat-blade screwdriver

NOTICE

These installation instructions contain important information. Ensure that the end user receives this copy and is aware of its importance for future reference.

STEP 1

Read and understand all steps in the instructions before starting the installation. Park the motorcycle on a hard, level surface and turn off the ignition. Put the bike on its center stand (if equipped). Allow the engine and exhaust system to cool. Remove the main fuse.

WARNING

ACCIDENTAL VEHICLE START-UP COULD CAUSE DEATH OR SERIOUS INJURY, REMOVE THE MAIN FUSE BEFORE PROCEEDING.

NOTICE

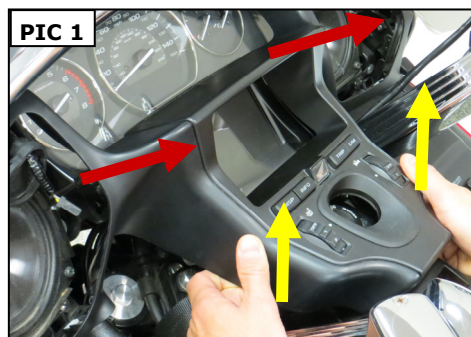
Avoid damage to the motorcycle. Protect painted surfaces with a soft cloth or blanket.

STEP 2

Refer to **PIC 1**. Remove the key from the ignition (**IGN**).

Carefully pull upward on the meter panel near the **IGN** to release the two tabs.

Carefully lift the upper portion of the meter panel and to release the bosses from the grommets.



CUSTOMER SERVICE

877.370.3604 (toll free)

INSTALLATION QUESTIONS

techsupport@kuryakyn.com
or call 715.247.2983

LIMITED WARRANTY

Kuryakyn warrants that any Kuryakyn products sold hereunder, shall be free of defects in materials and workmanship for a period of one (1) year from the date of purchase by the consumer excepting the following provisions:

- Kuryakyn shall have no obligation in the event the customer is unable to provide a receipt showing the date the customer purchased the product(s).
 - The product must be properly installed, maintained and operated under normal conditions.
- Kuryakyn makes no warranty, expressed or implied, with respect to any gold plated products.
 - Kuryakyn shall not be liable for any consequential and incidental damages, including labor and paint, resulting from failure of a Kuryakyn product, failure to deliver, delay in delivery, delivery in nonconforming condition, or for any breach of contract or duty between Kuryakyn and a customer.
- Kuryakyn products are often intended for use in specific applications. Kuryakyn makes no warranty if a Kuryakyn product is used in applications other than intended.
- Kuryakyn electrical products are warranted for one (1) year from the date of purchase by the consumer. L.E.D.'S contained in components of Kuryakyn products will be warranted for defects in materials and workmanship for 3 years from the date of purchase where as all other components shall be warranted for one(1) year. This includes, but is not limited to; control modules, wiring, chrome & other components.

- Kuryakyn makes no warranty of any kind in regard to other manufacturer's products distributed by Kuryakyn. Kuryakyn will pass on all warranties made by the manufacturer and where possible, will expedite the claim on behalf of the customer, but ultimately, responsibility for disposition of the warranty claim lies with the manufacturer.

ABOUT OUR CATALOG

For purchasing Kuryakyn® products, you can receive a complete catalog free of charge. Send the Proof-of-Purchase below with your address to: Kuryakyn
454 County Road V V
Somerset, WI 54025-9031
Please indicate either Accessories Catalog for Harley-Davidson® or GL & Metric Cruisers.

Be sure to ask your local dealer about other Kuryakyn® products, the motorcycle parts and accessories designed for riders by riders.

©2005 Kuryakyn USA® All Rights reserved.

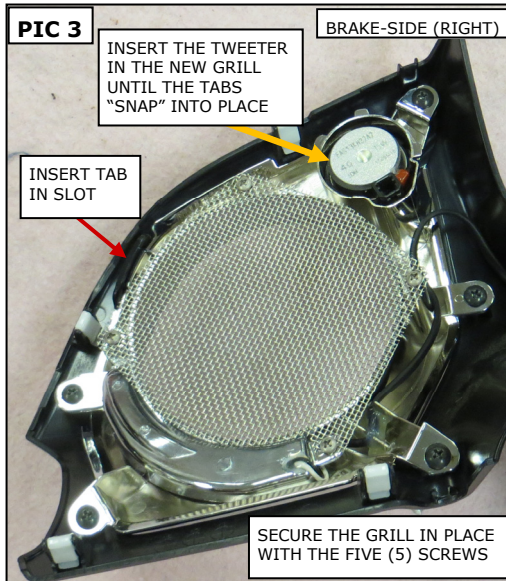
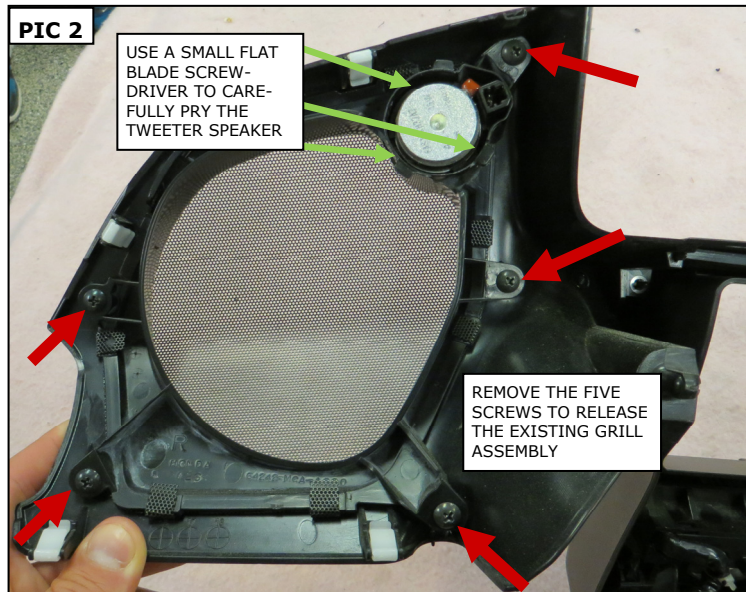


STEP 3 On the backside of the meter panel, remove the rubber boots covering the tweeter speakers and disconnect the connectors;

Disconnect the multi-display control-switch connector from the backside of the meter panel;
remove the meter panel; set it face down on a soft sturdy surface.

STEP 4 Refer to **PIC 2**. On the backside of the meter panel, use a small flat blade screwdriver to carefully release the three retainer tabs; remove the tweeter speaker and set it aside for now.

STEP 5 Refer to **PIC 2**. Remove and save the five (5) Phil-



lips screws; remove the existing grill assembly and set it aside, it will not be reused.

STEP 6 Repeat **STEPS 4 and 5** for the other side.

STEP 7 Refer to **PIC 3**. Locate the brake-side (Right) Speaker Bezel;

insert one of the tweeters as shown until the tabs "snap" into place.

Refer to **PIC 3**. Insert the tab in the slot and secure the Bezel to the panel with the five (5) screws removed in **STEP 5**. **DO NOT OVERTIGHTEN THE SCREWS!**

STEP 8 Repeat **STEP 7** for the other side.

STEP 9 Refer to **PIC 4**. Route the wiring from the brake-side (Right) Bezel toward the clutch-side (left);

ensure that the wiring remains in the channel as shown in **PIC 4**.

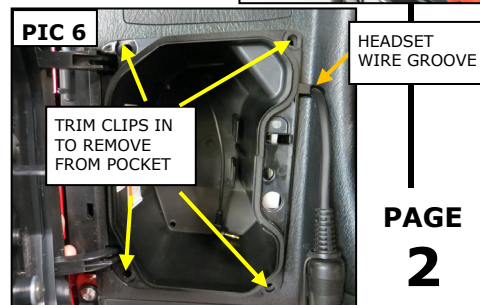
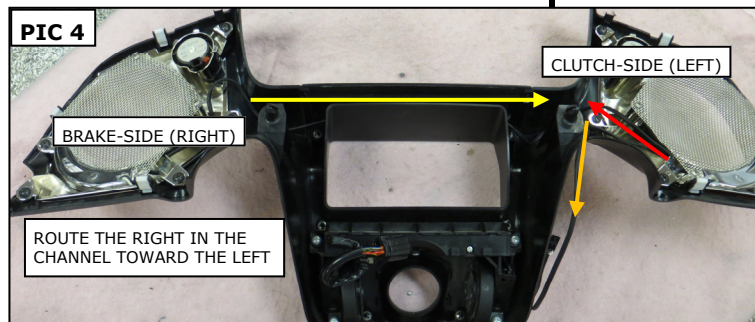
STEP 10 Refer to **PIC 5**. Use a non-marring trim tool to **CAREFULLY** pry the clutch-side (left) fairing molding up and off;

start at the bottom and work your way up to release all the bosses from the slots. **BE PATIENT!**

STEP 11 Refer to **PIC 6**. Open the left fairing pocket and locate the four trim clips in the corners;

push the trim clip center-pins inward to release them from the pocket; set the clips aside and remove the pocket.

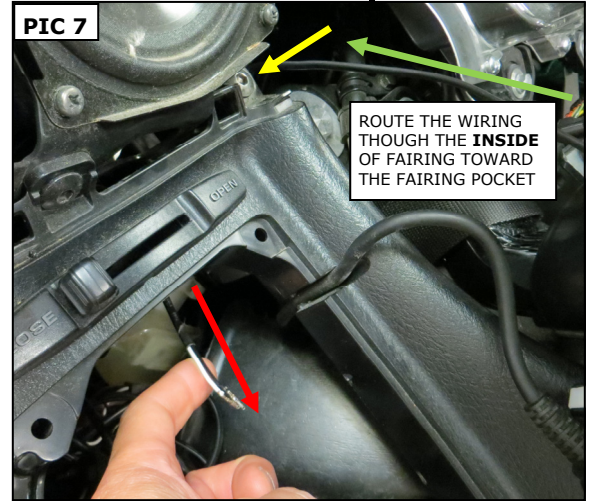
-cont.-



STEP 12 Hold the meter panel assembly in place and route the wire as shown in **PIC 7**;

the wire needs to be fed under the speaker in the fairing to the area under the fairing pocket;

ensure that the wiring does not come into contact with moving parts, abrasive surfaces or heat.



NOTICE

STEP

13

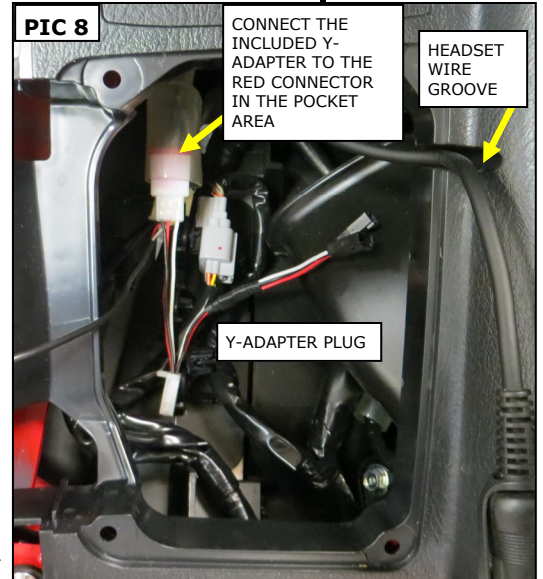
Dielectric grease inhibits moisture and prevents corrosion. Kuryakyn recommends the use of the included dielectric grease on ALL electrical connections. Apply dielectric grease directly to mating surfaces.

Refer to **PIC 8**. In the fairing pocket area, locate the **RED** connector;

locate the included Y-Adapter Plug;

apply some of the included Dielectric Grease to the terminal ends of the connectors;

connect the included Y-Adapter Plug to the **RED** plug.



STEP 14 Refer to **PIC 8**. Apply some of the included Dielectric Grease to the terminal ends of the Speaker Bezel connector and connect it to either of the smaller **BLACK** Y-Adapter connectors.

STEP 15 Reinstall the main fuse;

insert the key and turn **IGN ON**;

Ensure proper Speaker Bezel light function (the lights should function like a running light). Turn **IGN OFF** and remove the key.

STEP 16 Ensure that all wiring does not come into contact with moving parts, abrasive surfaces or heat;

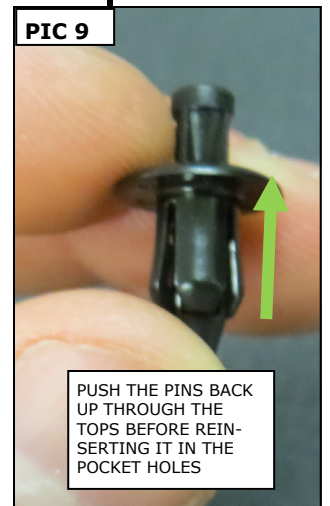
reinstall the fairing pocket in the reverse order it was removed.

Refer to **PIC 8**. Ensure that the headset wire remains in the groove during reinstallation.

STEP 17 Refer to **PIC 9**. Push the pins back up through the tops of the trim clips.

Secure the pocket to the fairing with the four trim clips;

push the center pins down to secure them into place.



STEP 18 Reinstall the fairing molding in the reverse order it was removed; start by hooking the top then, work your way down, snapping it into place.

STEP 19 Reconnect the tweeter speaker connectors and multi-display control-switch connector;

insert the key and turn **IGN ON**;

NOTICE

ensure proper speaker display function;

It is the end user's responsibility to ensure that all of the fasteners (including pre-assembled) are tightened before operation of the motorcycle. Kuryakyn will not provide warranty coverage on products or components lost or damaged due to improper installation or lack of maintenance. Periodic inspection and maintenance are required on all fasteners.

and
tion;

Ride On!