



INSTALLATION

ALLEY CAT AIR FILTER KIT

9526

PARTS INCLUDED

- 1 Alley Cat Air Cleaner Cover— Chrome
- 1 Stay Ring—Black Plastic—**NOT USED**
- 1 Hardware Kit Containing:
 - 1 5/16"-18 to 1/4"-28 Stud
 - 1 Nylon Ratchet
 - 1 Tri-Bar Fastener
 - 3 Adhesive Backed Foam Blocks—**NOT USED**
- 1 Backing Plate
- 1 Filter
- 1 Spider Bracket
- 1 Velocity Plate—**NOT USED**
- 1 Air Lock Ring—**NOT USED**
- 1 Hardware Kit Containing
 - 5 #8-32 X 3/8 Countersunk Socket Cap Screws
 - 1 #8-32 X 5/16" Button Socket Head Cap Crew
 - 1 #8 Flat Washer
 - 3 1/4"-20 X 3/4" Socket Head Cap Screws—**NOT USED**
 - 3 1/4"-20 X 1/2" Socket Head Cap Screws—**NOT USED**
 - 2 Black Rubber Vacuum Caps—**NOT USED**
 - 1 Chrome Hose Retaining Plate
- 1 Mounting Kit Including:
 - 1 Rubber Manifold
 - 1 Mounting Bracket
 - 2 M6 Aluminum Spacer
 - 3 1/4"-20 X 5/8" Socket Head Cap Screw
 - 3 1/4"-20 Nylock Nut
 - 3 M6 Aluminum Tapered Bolt Cap
 - 2 M6 X 1.0 X 30mm Socket Head Cap Screw
 - 1 M6 X 1.0 X 16mm Socket Head Cap Screw
 - 1 6MM Serrated Flange Lock Nut
 - 3 M6 Flat Washer
 - 1 18" Hose
 - 1 Tube Silicone
 - 1 Three Way "T" Fitting — Barbed Nylon
- 1 650 V-Star Jet Kit Including:
 - 2 #35 Pilot Jet
 - 2 117.5 Main Jet
 - 2 120.0 Main Jet
 - 2 122.5 Main Jet
- 1 Installation Instructions

Please read and understand entire instructions before starting installation.

THANK YOU FOR CHOOSING KÜRYAKYN!

IN ORDER TO PROTECT YOU AND OTHERS FROM POSSIBLE INJURY AND/OR PROPERTY DAMAGE OR LOSS, PLEASE PAY CLOSE ATTENTION TO ALL INSTRUCTIONS, WARNINGS, CAUTIONS AND NOTICES REGARDING THE USE AND CARE OF THIS PRODUCT.

TOOLS SUGGESTED

Service manual, Metric and Standard Hex Wrench Sets, Metric and Standard Combination Wrenches Sets, Phillips and Flat Tip Screwdrivers

STRICTLY OBSERVE THE FOLLOWING GUIDELINES IN ORDER TO USE THE PRODUCT PROPERLY AND AVOID POTENTIALLY DANGEROUS ACCIDENTS.

CUSTOMER SERVICE

877.370.3604 (toll free)

INSTALLATION QUESTIONS

techsupport@kuryakyn.com
or call 715.247.2983

LIMITED WARRANTY

Küryakyn warrants that any Küryakyn products sold hereunder, shall be free of defects in materials and workmanship for a period of one (1) year from the date of purchase by the consumer excepting the following provisions:

- Küryakyn shall have no obligation in the event the customer is unable to provide a receipt showing the date the customer purchased the product(s).
 - The product must be properly installed, maintained and operated under normal conditions.
 - Küryakyn makes no warranty, expressed or implied, with respect to any gold plated products.
 - Küryakyn shall not be liable for any consequential and incidental damages, including labor and paint, resulting from failure of a Küryakyn product, failure to deliver, delay in delivery, delivery in nonconforming condition, or for any breach of contract or duty between Küryakyn and a customer.
- Küryakyn products are often intended for use in specific applications. Küryakyn makes no warranty if a Küryakyn product is used in applications other than intended.
- Küryakyn electrical products are warranted for one (1) year from the date of purchase by the consumer. L.E.D.'S contained in components of Küryakyn products will be warranted for defects in materials and workmanship for 3 years from the date of purchase where as all other components shall be warranted for one(1) year. This includes, but is not limited to; control modules, wiring, chrome & other components.
- Küryakyn makes no warranty of any kind in regard to other manufacturer's products distributed by Küryakyn. Küryakyn will pass on all warranties made by the manufacturer and where possible, will expedite the claim on behalf of the customer, but ultimately, responsibility for disposition of the warranty claim lies with the manufacturer.

ABOUT OUR CATALOG

For purchasing Küryakyn® products, you can receive a complete catalog free of charge. Send the Proof-of-Purchase below with your address to: Küryakyn, P.O. Box 339, Somerset, WI 54025. Please indicate either Accessories Catalog for Harley-Davidson® or GL & Metric Cruisers.

Be sure to ask your local dealer about other Küryakyn® products, the motorcycle parts and accessories designed for riders by riders.

©2005 Küryakyn USA® All Rights reserved.



kuryakyn.com

WARNING THIS INDICATION ALERTS YOU TO THE FACT THAT IGNORING THE CONTENTS DESCRIBED HEREIN CAN RESULT IN POTENTIAL DEATH OR SERIOUS INJURY.

NOTICE This indication alerts you to the fact that ignoring the contents described herein may negatively affect product performance and functionality.

CAUTION This indication alerts you to the fact that ignoring the contents described herein can result in potential injury.

NOTICE IF INSTALLING THIS PRODUCT FOR ANOTHER PARTY, PLEASE MAKE SURE THEY RECEIVE THIS COPY OF THE INSTALLATION INSTRUCTIONS SO THEY ARE AWARE OF THE IMPORTANT INFORMATION CONTAINED IN THEM.

STEP 1 Read and understand all steps in the instructions before starting the installation. Park the motorcycle on a hard, level surface and turn off the ignition. Let cool.

WARNING YOU WILL BE WORKING AROUND THE ENGINE AND EXHAUST SYSTEM DURING INSTALLATION. ENSURE THAT THE ENGINE AND EXHAUST SYSTEM HAVE FULLY COOLED TO PREVENT INJURY.

WARNING A FACTORY SERVICE MANUAL WILL BE HELPFUL IN PERFORMING THIS INSTALLATION. DO NOT ATTEMPT TO PERFORM THIS INSTALLATION IF YOU ARE NOT CONFIDENT IN YOUR ABILITY TO COMPLETE ALL OF THE STEPS IN THE PROCEDURE; CONSULT A TRAINED TECHNICIAN. IMPROPER INSTALLATION COULD RESULT IN SERIOUS INJURY OR DEATH.

NOTICE Installation of this kit **REQUIRES** carb re-jetting over and above what may have already been performed for pipe installation. This is a complex procedure and we strongly recommend that this be performed by your dealer or a competent mechanic. If you choose to attempt this on your own, you will need the service manual for this model as carb removal and disassembly instructions are not provided in this literature. **THE FOLLOWING JETTING RECOMMENDATIONS ARE INTENDED AS A STARTING POINT.** Optimal performance and drivability may require fine tuning. Adjustments may be needed for higher altitudes. General rule of thumb is one jet size smaller for every 3000-4000 feet of elevation.

NOTICE Rejetting and tuning a motorcycle can be a complex task. Due to factors outside of our control, Küryakyn **WILL NOT** be held liable for any labor costs incurred from installation of this kit.

JETTING STARTING POINT RECOMMENDATIONS

Cobra/Stock Exhaust
 Main Jet 117.5
 Pilot Jet 35
 PMS Screw 1-1/2 Turns Out From Bottom

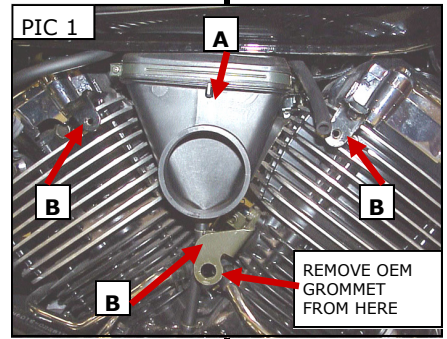
V&H Style or Open Pipes
 Main Jet 120
 Pilot Jet 35
 PMS Screw 1-1/2 Turns Out From Bottom

STEP 2 Remove the stock air cleaner and components to the point shown in PIC.1. The stock plastic airbox adapter "A" and stock mounting brackets "B" will remain in place. Remove the rubber grommet from the center bottom mounting point. PIC 1

-cont.-

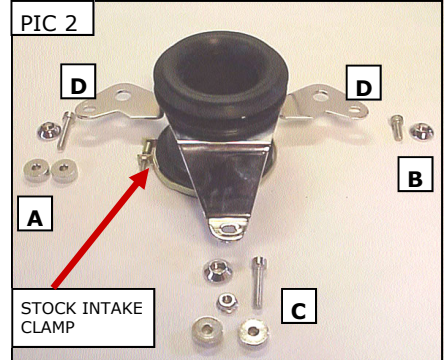
STEP 3 Insert both flanges of the rubber adapter through the mounting bracket as shown in PIC.2. The hardware components used for installation are placed near their respective mounting points:

- "A" Socket head cap screw - 30mm long, tapered bolt cap, and two spacers. The spacers are placed between the chrome, and the stock mounting brackets.
- "B" Socket head cap screw - 15mm long , tapered bolt cap
- "C" Socket head cap screw - 30mm long, tapered bolt cap, two spacers (place between chrome and stock brackets), and flange nut.
- "D" Mounting holes.

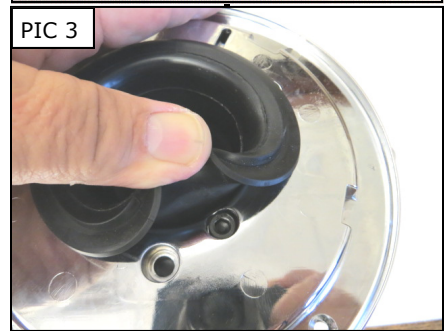


STEP 4 Insert the larger (first) flange of the rubber adapter through the backing plate, leaving the thinner rubber flange on the back side of the backing plate. Rotate the backing plate so the holes on the mounting bracket line up with the holes on the backing plate. Using the supplied 1/4"-20 X 5/8" socket head cap screws and 1/4" nylock nuts, attach the backing plate to the mounting bracket. Tighten securely. PIC 3

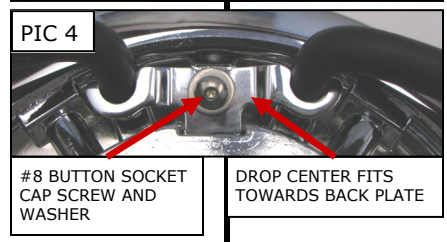
NOTE: Roll the edge of the thicker front flange back to expose each hole, insert one of the socket head cap screws through the front of the backing plate. PIC 3 Roll the thinner rear flange back to expose the hole and secure with the nylock nut. Repeat for all three holes.



STEP 5 Locate the 18" hose from the hardware kit and cut it into two equal length pieces. On the new backing plate, install the two pieces hoses in the orientation shown in PIC 4. Place the steel tube plate over the hoses, (the dropped center of the hose retaining plate goes towards the backing plate) and secure with the #8-32 X 5/8" button head cap screw and #8 washer. PIC 4 Insert the small ends of the T-Fitting into the ends of the hoses. PIC 5

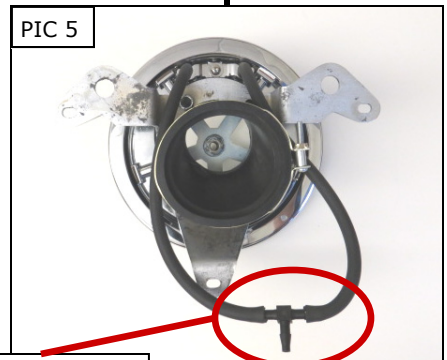


STEP 6 The opening in the adapter boot must be slipped over the flange of the stock rubber airbox and secured with the stock clamp. Install the mounting bracket as shown in PIC 6. Secure this assembly to the bike with the hardware specified in Step 3.



STEP 7 Install the Spider Bracket over the slots in the backing plate. Then attach it to the backing plate with the supplied #8-32 X 3/8" Countersunk Socket Cap Screws. PIC 7

STEP 8 Insert the larger end of the T-fitting attached to the hoses on the backing plate into the float bowl vent hose. PIC 8



STEP 9 Install the outer portion of the air filter to the backing plate. Install the center portion of the filter to the outer portion. There is a Hex cut into the back center of the center filter that will fit over the Hex post on the Spider Bracket. Rotating the filter will allow this post to fall into the cut-out.

STEP 10 Insert the 5/16" (larger) end of the stud through the outside of the Alley Cat Cover. PIC 9

INSERT SMALL ENDS OF "T" FITTING INTO HOSES

-cont.-

STEP 11 Place a drop of blue thread locker on the 5/16" (larger) end of the stud. Place the Alley Cat Cover over the filter and secure to the filter with the stud. Tighten to 36-60 in/lbs, lining up the flats on the stud with the dowels on the cover as shown in PIC 10.

STEP 12 Place the Nylon Ratchet over the hex on the stud on the outside of the cover. There are indents in the Nylon Ratchet that will fit over the dowels on the cover. PIC 11 You may have to loosen or tighten the stud slightly to get the indents and dowels to line up. PIC 12 Place a drop of blue thread locker on the threads of the stud and thread the Tri-Bar fastener to the stud. There are teeth on the Nylon Ratchet that the teeth on the Tri-Bar will engage to help hold the Tri-Bar in place. **The Tri-Bar only needs to be finger tight! DO NOT over tighten it!**

STEP 13 **Check all hose connections and tighten all hardware. Rotate the throttle open and make sure it returns correctly before starting the motorcycle.**

NOTICE Some of our high performance air cleaners extend beyond the stock/OEM unit to achieve smoother air flow and better performance. Riding position may be affected, so it is important to familiarize yourself with the new riding position.

NOTICE It is the installer's responsibility to ensure that all of the fasteners (including pre-assembled) are tightened before operation of the motorcycle. Küryakyn will not provide warranty coverage on products or components lost due to improper installation or lack of maintenance. Periodic inspection and maintenance are required on all fasteners.

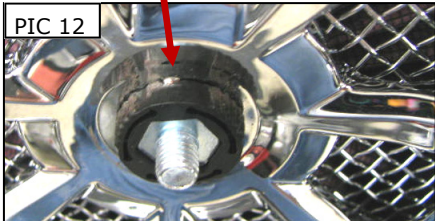
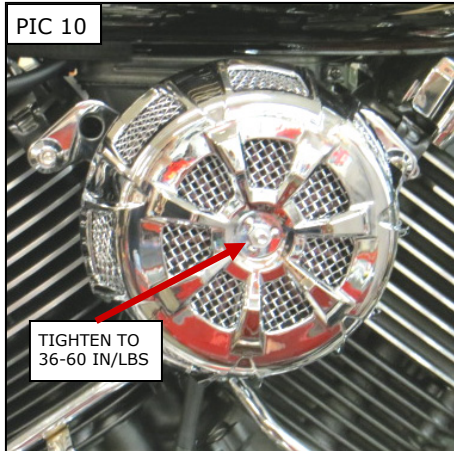
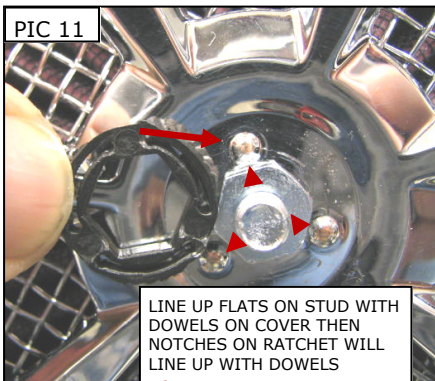
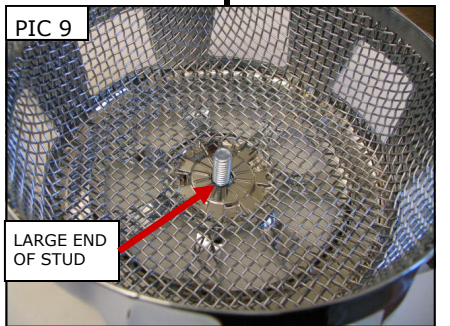
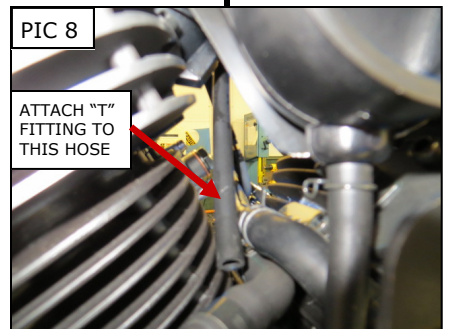
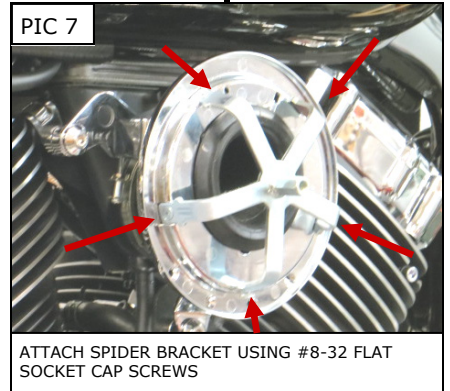
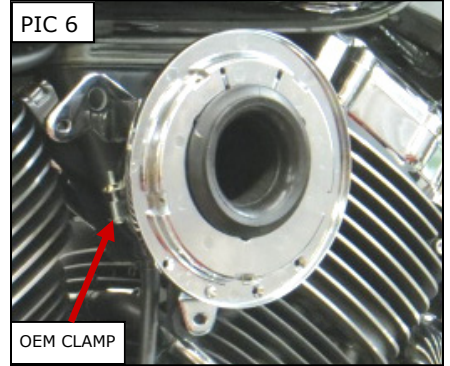
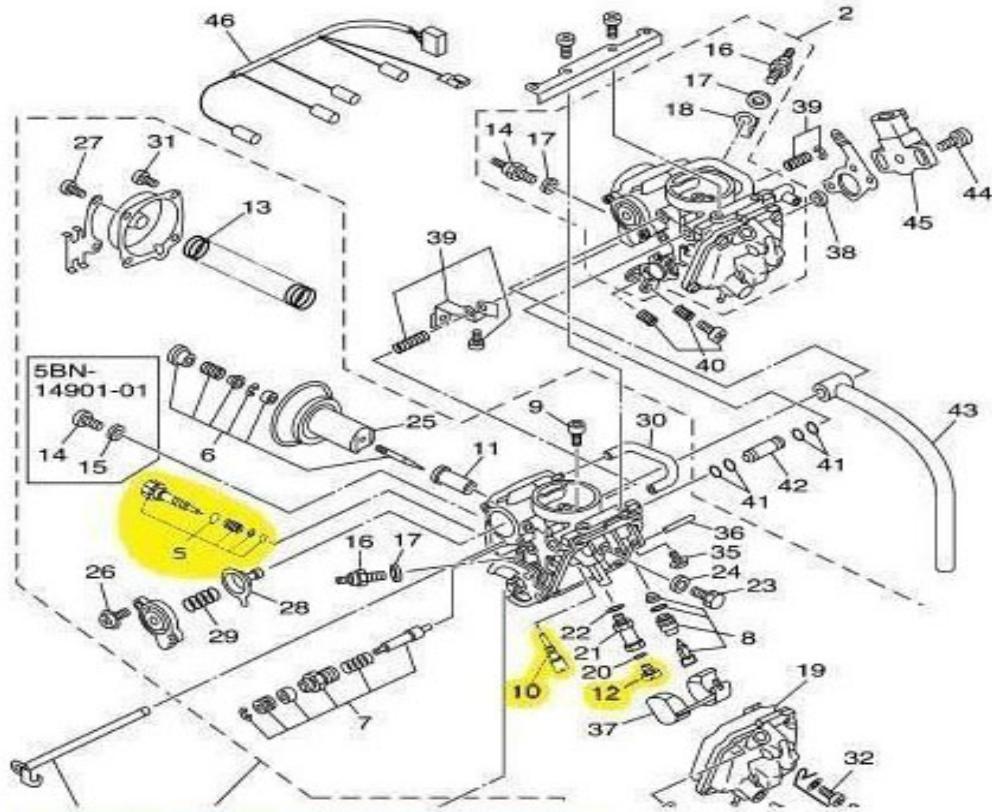
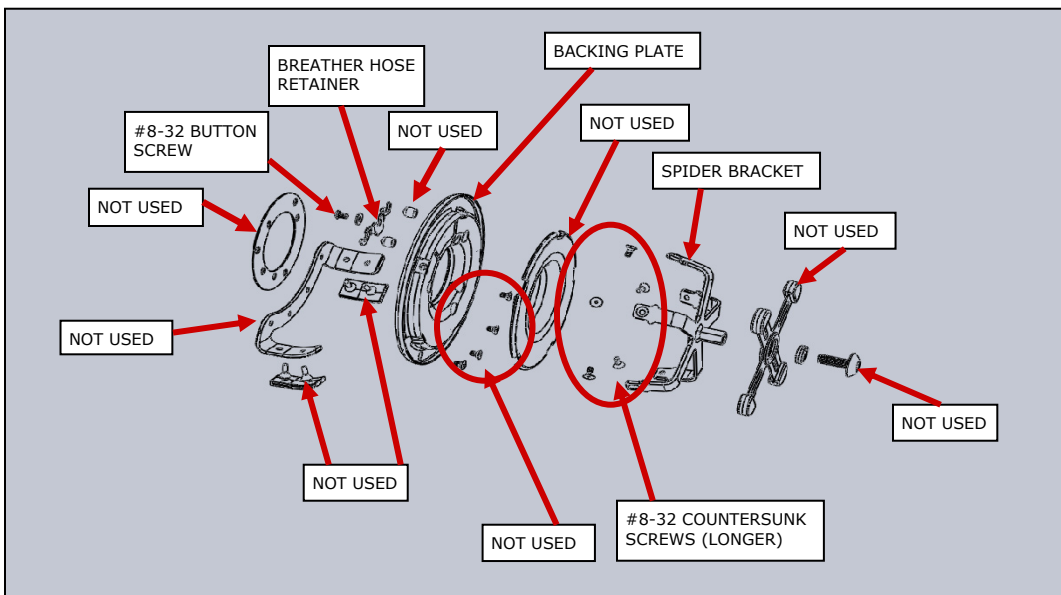


FIG 1

V-Star 650



- 5 - Pilot Screw
- 10 - Pilot Jet (20)
- 12 - Main Jet (90)



Ride On!