



# INSTALLATION

## ALLEY CAT AIR FILTER KIT

## 9528

### PARTS INCLUDED

- 1 Alley Cat Cover
- 1 Backing Plate
- 1 Spider Bracket
- 1 Air Lock Ring
- 1 Velocity Ring
- 1 Alley Cat Cover Hardware Kit Containing:
  - 1 Double-ended Stud
  - 1 Ratchet Ring
  - 1 Tri Bar
  - 3 Foam Blocks
- 1 Hardware Kit Containing:
  - 5 #8-32 X 3/8" Flat Socket Cap Screws
  - 1 #8-32 X 5/16" Button Socket Cap Screw
  - 1 #8 Flat Washer
  - 3 1/4"-20 X 3/4" Socket Head Cap Screws
  - 3 1/4"-20 X 1/2" Socket Head Cap Screws
  - 2 Vacuum Caps—Black Rubber
  - 1 Tube Retainer Plate
- 1 Mounting Kit Containing:
  - 1 Air Filter Adapter
  - 1 Inlet Flow Plate
  - 1 Support Bracket
  - 2 M6 Tapered Bolt Caps
  - 1 M6 X 1.0 X 13mm Socket Head Cap Screws
  - 2 M6 X 1.0 X 16mm Socket Head Cap Screws
  - 1 M5 X .8 X 10mm Phillips Head Pan Screw
  - 1 M6 Flat Washers
  - 1 M6 Lock Washers
  - 1 18" Hose
  - 1 Barbed Tube Connector
  - 2 3/8" Barbed Elbow Fittings
  - 6 6" Black Nylon Cable Ties
- 1 Main Filter Element
- 1 Round Filter Element
- 1 Installation Instructions

Please read and understand entire instructions before starting installation.

### THANK YOU FOR CHOOSING KÜRYAKYN!

**IN ORDER TO PROTECT YOU AND OTHERS FROM POSSIBLE INJURY AND/OR PROPERTY DAMAGE OR LOSS, PLEASE PAY CLOSE ATTENTION TO ALL INSTRUCTIONS, WARNINGS, CAUTIONS AND NOTICES REGARDING THE USE AND CARE OF THIS PRODUCT.**



**THIS INDICATION ALERTS YOU TO THE FACT THAT IGNORING THE CONTENTS DESCRIBED HEREIN CAN RESULT IN POTENTIAL DEATH OR SERIOUS INJURY.**

### NOTICE

**This indication alerts you to the fact that ignoring the contents described herein may negatively affect product performance and functionality.**

### NOTICE

**IF INSTALLING THIS PRODUCT FOR ANOTHER PARTY, PLEASE MAKE SURE THEY RECEIVE THIS COPY OF THE INSTALLATION INSTRUCTIONS SO THEY ARE AWARE OF THE IMPORTANT INFORMATION CONTAINED IN THEM.**

### CUSTOMER SERVICE

877.370.3604 (toll free)

### INSTALLATION QUESTIONS

techsupport@kuryakyn.com  
or call 715.247.2983

### LIMITED WARRANTY

Küryakyn warrants that any Küryakyn products sold hereunder, shall be free of defects in materials and workmanship for a period of one (1) year from the date of purchase by the consumer excepting the following provisions:

- Küryakyn shall have no obligation in the event the customer is unable to provide a receipt showing the date the customer purchased the product(s).
  - The product must be properly installed, maintained and operated under normal conditions.
  - Küryakyn makes no warranty, expressed or implied, with respect to any gold plated products.
  - Küryakyn shall not be liable for any consequential and incidental damages, including labor and paint, resulting from failure of a Küryakyn product, failure to deliver, delay in delivery, delivery in nonconforming condition, or for any breach of contract or duty between Küryakyn and a customer.
- Küryakyn products are often intended for use in specific applications. Küryakyn makes no warranty if a Küryakyn product is used in applications other than intended.
- Küryakyn electrical products are warranted for one (1) year from the date of purchase by the consumer. L.E.D.'S contained in components of Küryakyn products will be warranted for defects in materials and workmanship for 3 years from the date of purchase where as all other components shall be warranted for one(1) year. This includes, but is not limited to; control modules, wiring, chrome & other components.

- Küryakyn makes no warranty of any kind in regard to other manufacturer's products distributed by Küryakyn. Küryakyn will pass on all warranties made by the manufacturer and where possible, will expedite the claim on behalf of the customer, but ultimately, responsibility for disposition of the warranty claim lies with the manufacturer.

### ABOUT OUR CATALOG

For purchasing Küryakyn® products, you can receive a complete catalog free of charge. Send the Proof-of-Purchase below with your address to: Küryakyn, P.O. Box 339, Somerset, WI 54025. Please indicate either Accessories Catalog for Harley-Davidson® or GL & Metric Cruisers.

Be sure to ask your local dealer about other Küryakyn® products, the motorcycle parts and accessories designed for riders by riders.

©2005 Küryakyn USA® All Rights reserved.



kuryakyn.com

**TOOLS SUGGESTED**

Metric and Standard Hex Wrench Sets, Metric Combination Wrench Set, Side Cutter, Factory Service Manual.

**STRICTLY OBSERVE THE FOLLOWING GUIDELINES IN ORDER TO USE THE PRODUCT PROPERLY AND AVOID POTENTIALLY DANGEROUS ACCIDENTS.**

**STEP 1** Read and understand all steps in the instructions before starting the installation. Park the motorcycle on a hard, level surface and turn off the ignition. Let cool.

**⚠ WARNING** YOU WILL BE WORKING AROUND THE ENGINE AND EXHAUST SYSTEM DURING INSTALLATION. ENSURE THAT THE ENGINE AND EXHAUST SYSTEM HAVE FULLY COOLED TO PREVENT INJURY.

**⚠ WARNING** A FACTORY SERVICE MANUAL WILL BE HELPFUL IN PERFORMING THIS INSTALLATION. DO NOT ATTEMPT TO PERFORM THIS INSTALLATION IF YOU ARE NOT CONFIDENT IN YOUR ABILITY TO COMPLETE ALL OF THE STEPS IN THE PROCEDURE; CONSULT A TRAINED TECHNICIAN. IMPROPER INSTALLATION COULD RESULT IN SERIOUS INJURY OR DEATH.

**NOTICE** The installation of any high performance air cleaner system can cause a "lean" fuel/air mixture. A "lean" fuel/air mixture can cause engine overheating resulting in severe engine damage. Küryakyn recommends installing our Wild Things Controller, P/N 9218, on fuel injected bikes, or having the bike tuned by an experienced tuner, on a dyno, with an exhaust gas analyzer.

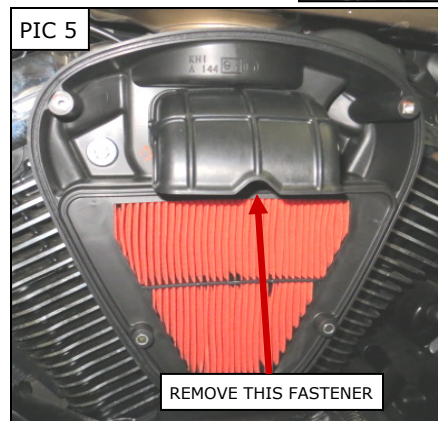
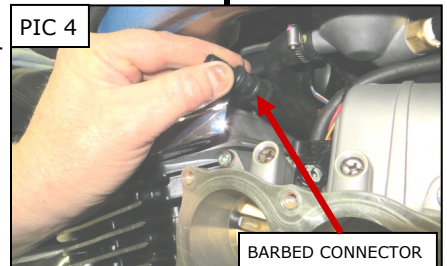
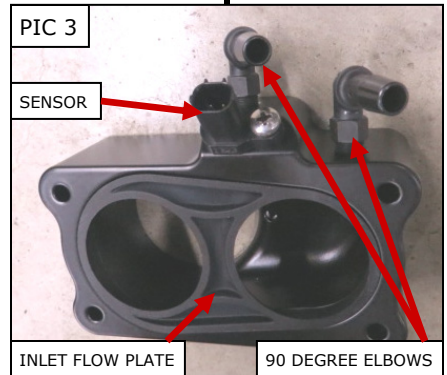
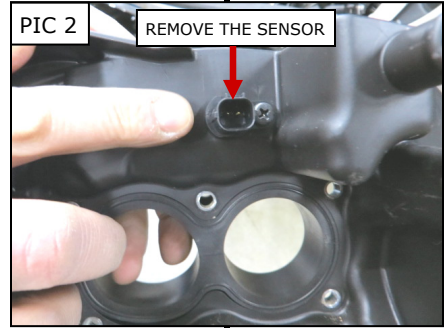
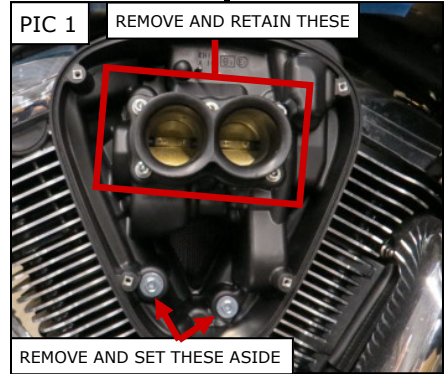
**STEP 2** Remove the right side cover. Remove the five fasteners that secure the backing plate to the throttle body. PIC 1 Set these aside, you will reuse four of them. Remove the two lower mounting fasteners. PIC 1 Set these aside, they will not be reused. Gently pull the backing plate away from the throttle body, remove the hose and unplug the sensor at the top of the backing plate. Remove the sensor from the backing plate. PIC 2 Set this aside, it will be reused.

**STEP 3** Locate the mounting hardware kit. Place the inlet flow plate into the back of the air filter adapter as shown in PIC 3. The radius side of the inlet plate goes towards the inside of the adapter.

**STEP 4** Install the 90 degree elbow fittings to the top of the air filter adapter. PIC 3 These will angle back towards the back of the engine. PIC 3 Using the supplied M5 X .8 X 10mm Phillips screw, attach the sensor removed in Step 2 to the adapter. PIC 3

**STEP 5** Install the barbed hose connector from the hardware kit into the hose that was removed from the back side of the OEM backing plate. PIC 4 Secure it with one of the included cable ties as a hose clamp.

**STEP 6** Remove the four fasteners that secure the left side cover to the backing plate. Remove the fastener that secures the filter to the backing plate. PIC 5 Remove the fastener that secures the backing plate to the cylinder (PIC 6) , remove the hose from the back of the plate (PIC 7) and remove the backing plate.



-cont.-



**STEP 7** Remove the hose shown in PIC 8. Replace it with the hose from the hardware kit. PIC 9 Secure the end of the hose with one of the included cable ties as a hose clamp. Route the open end of the hose to the right side of the motorcycle where it will attach to one of the elbow fittings on the air filter adapter.

**STEP 8** Attach the air filter adapter to the throttle body using four of the OEM throttle body fasteners removed in Step 2. Refer to PIC 12 for correct adapter orientation.

**STEP 9** Gently pull the hose attached in Step 7 along side of the front 90 degree elbow on the air filter adapter. PIC 10 Using the nipple as a guide, cut the hose to fit so that it can be installed on the front 90 degree elbow. Secure it to the elbow with one of the included cable ties as a hose clamp. Using the piece of hose just trimmed off, attach one end to the barbed hose connector installed in Step 5 and the other end to the rear 90 degree elbow. PIC 11 This may have to be trimmed to fit. Secure both ends with the included cable ties. Plug the wire harness into the sensor installed in Step 4.

**STEP 10** Place the included M6 lock washer, then the M6 flat washer on the included M6 X 1.0 X 13mm socket head cap screw and loosely install it in the bottom of the air filter adapter. Slide the support bracket under the air filter adapter so the M6 cap screw fits in the notch. PIC 12 Tighten the cap screw finger tight for now.

**STEP 11** Attach the legs of the support bracket to the bosses on the cylinders using the two included M6 X 1.0 X 16mm socket head cap screws and M6 bolt caps. PIC 12 Tighten these securely, then tighten the cap screw from Step 10 securely.

**STEP 12** Locate the backing plate for the Alley Cat air cleaner. Install the included black rubber vacuum caps over the nipples on the backing plate. Attach the tube retainer plate with the supplied #8-32 button socket cap screw and #8 flat washer. PIC 13 (The dropped center of the tube retainer plate goes towards the backing plate.) Tighten securely.

**STEP 13** Insert the 1/4-20 x 1/2" fasteners through the mounting holes (PIC 14) from the front of the backing plate. Place the Air Lock Ring over these from the back side. PIC 15 The Air Lock Ring will act as a gasket between the backing plate and the air filter adapter, **no extra gasket** will be needed here. Attach the backing plate assembly to the air filter adapter. Tighten the three fasteners securely.

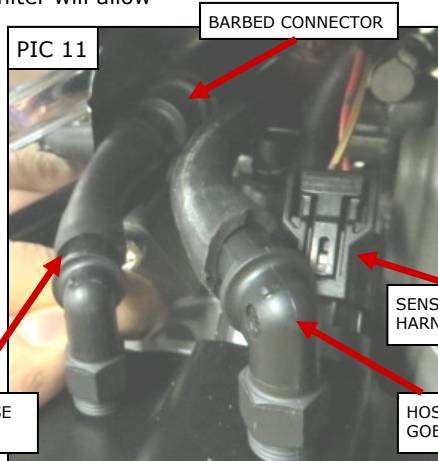
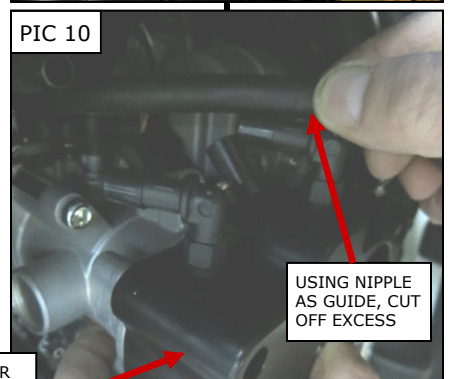
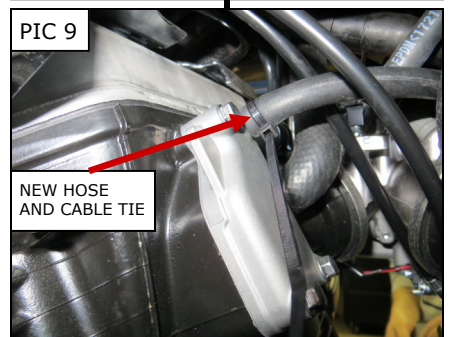
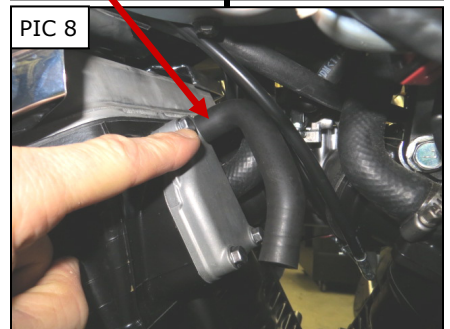
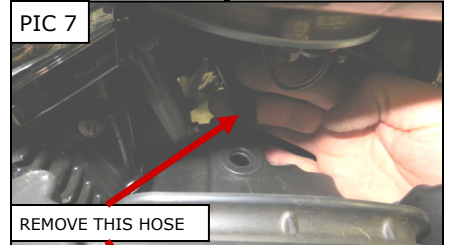
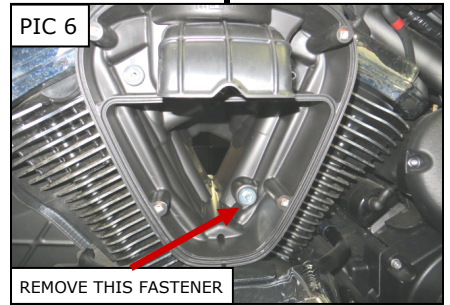
**STEP 14** Line up the velocity plate on the front of the backing plate so the slots in the edge line up with the slots on the backing plate and the cut out is lined up with the three openings in the top of the backing plate. PIC 16

**STEP 15** Install the spider bracket over the slots in the backing plate and velocity plate. Attach it to the backing plate with the supplied #8-32 X 3/8" countersunk socket cap screws. PIC 17

**STEP 16** Install the outer portion of the air filter to the backing plate. This will snap in place over the velocity plate. Install the center portion of the filter to the outer portion. There is a hex cut into the back center of the center filter that will fit over the hex post on the spider bracket. Rotating the filter will allow this post to fall into the cut-out.

**STEP 17** Insert the 5/16" (larger) end of the double-ended stud through the outside of the Alley Cat Cover. PIC 18

**STEP 18** Place a drop of blue thread locker on the 5/16" (larger) end of the stud. Place the Alley Cat Cover over the filter and secure to the spider bracket with the stud. Tighten to 36-60 in/lbs, lining up the flats on the stud with the dowels on the cover as shown in PIC 19 and PIC 20.



-cont.-

**STEP 19**

Place the Nylon Ratchet over the hex on the stud on the outside of the cover. There are indents in the Nylon Ratchet that will fit over the dowels on the cover. PIC 19 You may have to loosen or tighten the stud slightly to get the indents and dowels to line up. PIC 20 Place a drop of blue thread locker on the threads of the stud and thread the Tri-Bar fastener to the stud. There are teeth on the Nylon Ratchet that the teeth on the Tri-Bar will engage to help hold the Tri-Bar in place. **The Tri-Bar only needs to be finger tight! DO NOT over tighten it!**

**STEP 20**

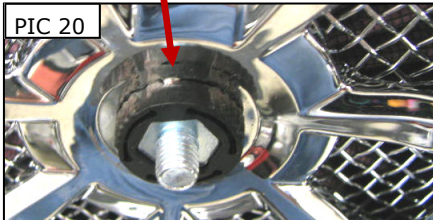
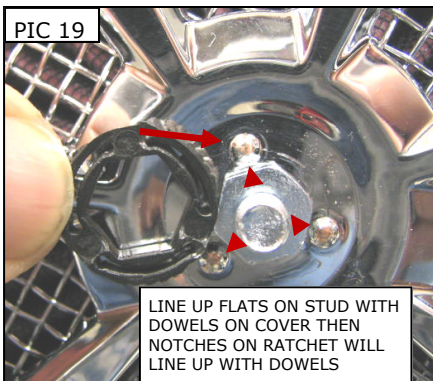
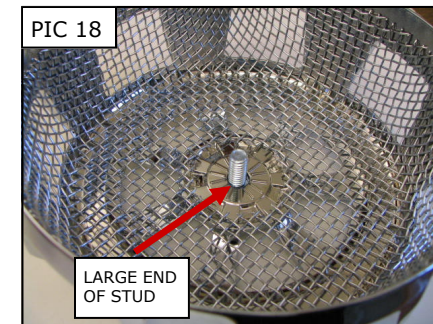
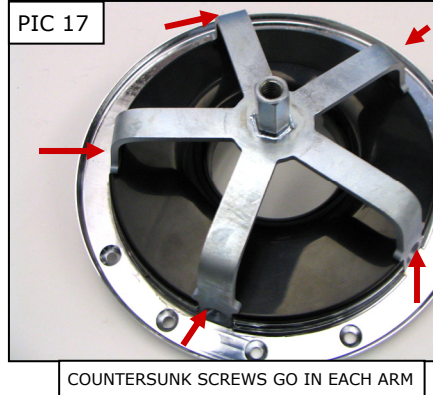
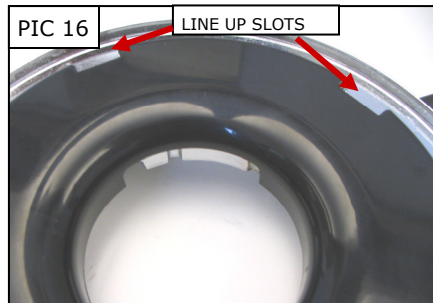
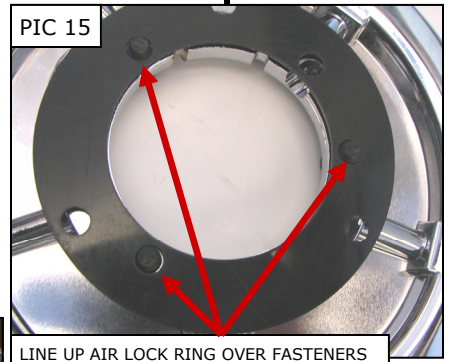
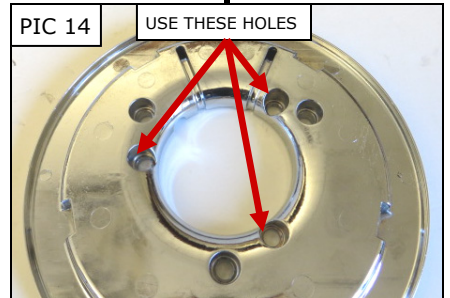
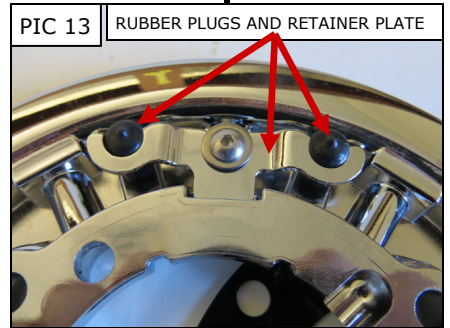
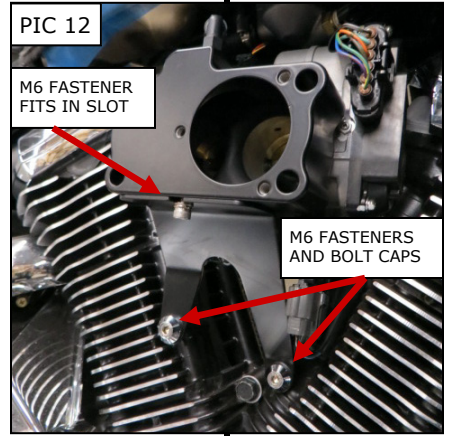
**Double check the tightness of all related fasteners, check for hose clearance and check throttle for correct operation, making sure it returns properly, before starting the bike.**

**NOTICE**

Some of our high performance air cleaners extend beyond the stock/OEM unit to achieve smoother air flow and better performance. Riding position may be affected, so it is important to familiarize yourself with the new riding position.

**NOTICE**

It is the installer's responsibility to ensure that all of the fasteners (including pre-assembled) are tightened before operation of the motorcycle. Küryakyn will not provide warranty coverage on products or components lost due to improper installation or lack of maintenance. Periodic inspection and maintenance are required on all fasteners.



*Ride On!*